

Inno

Wall Mounted Luminaire



Wall luminaires with a selection of beam distributions for various downward or upward lighting requirements. Designed to illuminate the wall surface and areas. They are suitable for many applications such as residential and pedestrian areas, shopping malls, parks and gardens, as well as commercial, historical or modern architectural interiors and exteriors.

The luminaire rated as CLASS I with integral driver, available in Colour temperature 3000K and 4000K, LED CRI >80 and life time 50,000 Hours.

Low copper content die-cast aluminum housing and frame. Stainless steel fasteners in grade 316. High efficiency PMMA lens. Durable silicone rubber gasket and clear toughened glass. Single cable entry. Housing is treated with a chemical chromated protection before powder coating, ensuring high corrosion resistance.

Luminarias de pared con una selección de distribuciones de haces para diversos requisitos de iluminación descendente o ascendente. Diseñado para iluminar la superficie y las áreas de la pared. Son adecuados para muchas aplicaciones, como zonas residenciales y peatonales, centros comerciales, parques y jardines, así como para interiores y exteriores arquitectónicos comerciales, históricos o modernos.

La luminaria clasificada como CLASE I con controlador integral, disponible en Temperatura de color 3000K y 4000K, LED CRI > 80 y tiempo de vida 50,000 horas.

Carcasa y marco de aluminio fundido a presión de bajo contenido de cobre. Sujetadores de acero inoxidable en grado 316. Lente de PMMA de alta eficiencia. Junta de goma de silicona duradera y vidrio templado claro. Entrada de cable único. La carcasa se trata con una protección cromatizada química antes del recubrimiento en polvo, asegurando una alta resistencia a la corrosión.

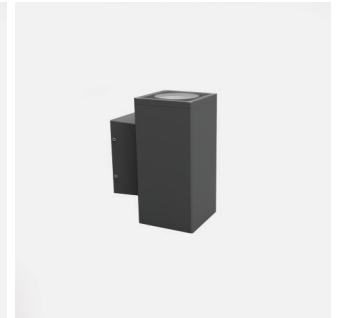
outdoor

Inno

Wall Mounted Luminaire



Inno R



Inno S

Product Information

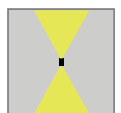
- > Lamp Type
COB
- > Dimming Options
Not Available
- > Nominal Operating Voltage
220V-240V / 50-60Hz
- > Control Type
On / Off
- > Median useful life
L70B10 50,000 Hours
- > Materials
Die-Cast Aluminum + Tempered Glass, Stainless Steel Screws
- > Installation Type
Wall Mounted
- > Ingress protection
Code IP66
- > Mech. impact
Ik07
- > Power Factor
0.9+
- > Working Temperature
Ta : -15°C ~ +55°C
- > Protection Class
IEC Safety Class I
- > Finish
Polyester powder coat with phospho-chromated pre finish.



Ik07

IP66

650°C



NW° Sym.

Model modelo	Power energía	Color temperature CCT temperatura del color	Luminous Flux lm flujo luminoso	Beam angle deg. Ángulo de haz
Inno S	15	2700, 3000k, 4000k,	2 x 610	Symmetrical 30°
	27	5700K	2 x 1200	Symmetrical 40°
	35		2 x 1560	Symmetrical 60°
Inno R	18		2 x 713	Symmetrical 30°
	27		2 x 1200	Symmetrical 40°
	35		2 x 1580	Symmetrical 60°

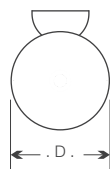
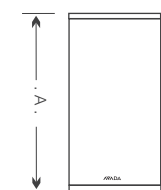
Ordering Guide Sample *Ejemplo de la guía de pedido*

MO-WATT-ITL-CT-VA-OA-OB

EXAMPLE : INNO S 14 WM 30 BA01 OA02 OB01

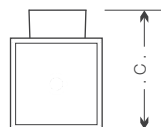
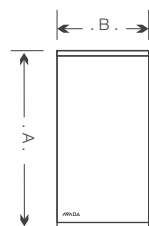
MO	Model	WATT	ITL	Installation Type	CT	C.C.T	BA+	Beam Type BA	OA+	Finish Colour	OB+	Voltage
	Inno S	15	WM	Wall Mounted	27	2700K	01	30°	01	Graphite	01	220VAC
	Inno R	18			30	3000K	02	40°	02	Light Gray	02	24VDC
		27			40	4000K	03	60°	03	Dark Gray		
		35			57	5700K						

Product Dimensions *Dimensión del producto*



Inno R

	Model / Watt <i>modelo / power</i>	Height A <i>altura</i>	Width B <i>anchura</i>	Depth C <i>fondo</i>	Diameter D <i>diametro</i>
Inno S	6x2	180mm	86mm	116mm	90mm 108mm 145mm
	12x2	221mm	118mm	148mm	
	15x2	300mm	150mm	190mm	
Inno R	8x2	220mm		129mm	
	12x2	260mm		147mm	
	15x2	300mm		185mm	



Inno S

Planning Aid

** For Planning Aid , visit <https://www.avadalight.es/planning-aid/>

View Online

Inno, Category: visit <https://www.avadalight.es/outdoor-lighting/outdoor-wall-lights/>

5 Years Warranty

As a globally leading luminaire manufacturer, AVADA Lighting provides a five-year warranty for its complete product range within all European Countries.

Avada Lighting is constantly developing and improving its products. All descriptions, illustrations, drawings and specifications in this publication present only general particulars and shall not form part of any contract. The right is reserved to change specifications without prior notification or public announcement. All goods supplied by the company are supplied subject to the company's General Conditions of Sale, a copy of which is available on request. All measurements are in millimetres and weights in kilograms unless otherwise stated.